

Standard Grade Biospecimens



Overview

Indivumed's Standard Grade biospecimens are samples obtained from our clinical pathology network, as well as external sources according to customer demands that can be used to study personalized medicine, drug and diagnostics development, or specifically for high-throughput validation of diagnostic tests and platforms. Indivumed's capability is to accelerate your time to market without having to compromise on quality and clinical data integrity.

Indivumed is continuously expanding its clinical network for human cancer tissue and fluids biobank. Together with Multi-omics Grade, the Standard Grade biospecimens are also part of the "Indivumed excellence for Biobanking," which is firmly established and acknowledged as synonymous with unparalleled quality. Indivumed offers a whole range of high-quality samples

for your specific needs at every step of your research and drug development process. For our Standard Grade biospecimens, tissue is collected from clinical institutions using a local protocol for resection and tissue preservation. Quality assessment performed by our certified in-house pathologists guarantees that the risk factors often associated with tissue samples, such as poor tissue or block quality, insufficient tumor cell content, or high levels of necrosis, are reduced. We enable access to thousands of routine pathology samples through our global external biospecimen network that comprises selected hospitals and partners across Europe, North America, and Asia.

Indivumed provides a broad spectrum of systematic sample quality and clinical data from the most stringent requirements to routine and standard operations.

Your Benefits

- Basic clinical data provided with every biospecimen
- Comprehensive clinical data, biomarkers, and mutation status data available for selected cohorts
- Full range of cancer entities available including normal adjacent tissue, normal tissue, and postmortem tissue
- Large biospecimen repository and special procurement services
- Informed patient consent available for selected cohorts
- Patient consents available according to applicable regulations



Biospecimen Types

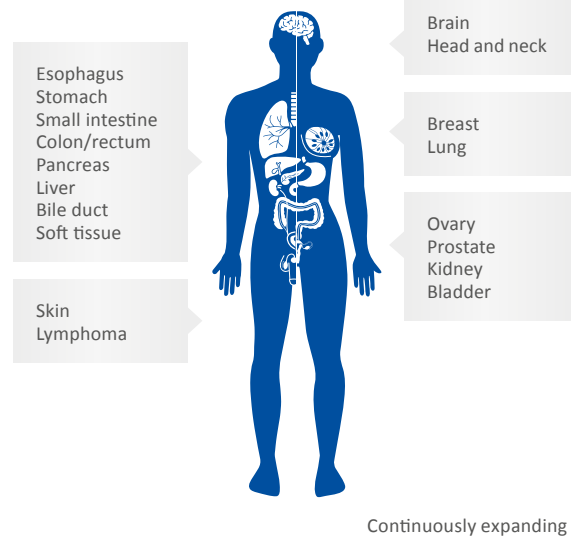


Tissue – tumor & matched normal adjacent

- Formalin-fixed paraffin-embedded (FFPE)

Our team will help you to select the most suitable biospecimen to match your needs.

Organs of Tumor Origin



Clinical Data

We offer a basic clinical data package that includes e.g. date of birth, gender, organ, histological type, tumor content, and TNM. Additional clinical data may be available for selected cohorts:

- Comprehensive: includes basic clinical data and current medications, drugs (intolerances, addictive), previous disease, neoadjuvant therapies, previous surgeries or cancer, family history, presurgical diagnostics, and tissue to formalin time
- Follow-up: includes detailed follow-up records on remission, relapse, and outcome including surgery and other therapies
- Additional data (e.g. biomarker status): MSI, MSS, KRAS, BRAF; NRAS for CRC/rectal carcinoma

About Indivumed

Indivumed GmbH is a physician-led, integrated global oncology company for personalized medicine with the world's premier high-content tumor database and highest quality biobank. Indivumed's standard operating procedures are trusted as the global benchmark for biospecimen and clinical data collection.

Our long-standing biobanking expertise is ISO 9001-certified and includes strict protocols for tissue sampling and processing with regard to crucial parameters such as tumor region, ischemia time, and information management.

Contact

Europe Tel.: +49 (40) 41 33 83 18

Email: CustServ@indivumed.com

USA Tel.: +1 (301) 228 9739

www.indivumed.com