

HUMAN BIOSPECIMENS & BIOFLUIDS

WITH ANNOTATED CLINICAL DATA



SPECIFICATIONS

INDIVUMED's fully consented biospecimens are obtained from approved medical centers following strict ethical standards. Immediately after surgical excision tissues are preserved according to INDIVUMED's ISO-certified procedure by highly trained study nurses who are present in the operating room.

LIMITED ISCHEMIA

- > Mean ischemia time of all tissue in the biobank is < 10 minutes
- > Blood is immediately cooled to 4-8 °C and processed within approximately 4 hours or less after draw

STANDARDIZED COLLECTION

- > Tissue is collected and processed using INDIVUMED's ISO-certified standardized protocol across all cancer types

CLINICAL DATA

- > Comprehensive clinical data is assembled and validated by an INDIVUMED documentation team
- > Outcome and follow up data is collected beginning 6 months post surgery

TYPES OF BIOSPECIMENS

TISSUE (Fresh-frozen / FFPE)

- > Tumor center
- > Tumor periphery
- > Matched normal

TYPES OF BIOFLUIDS

BLOOD

- > Plasma (1 ml)
- > Serum (0.5 ml)
- > PBMCs (aliquot 0.05 ml)
average cell number per aliquot 7×10^6

URINE (0.5 or 9.0 ml)

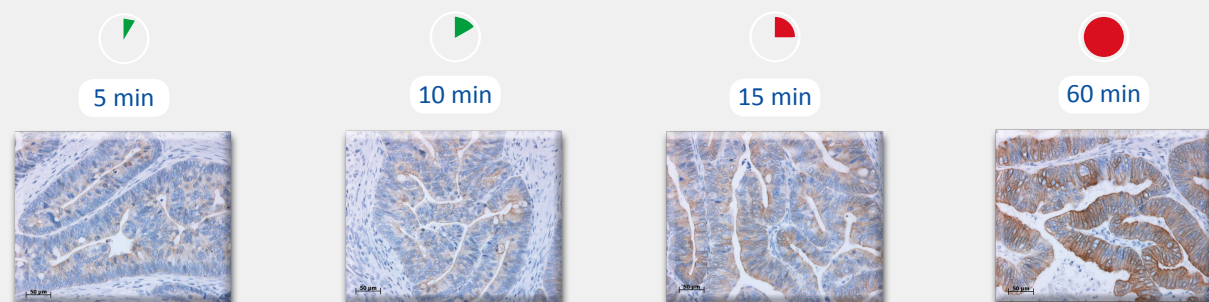
- > Supernatant
- > Sediment

CLINICAL DATA

- > > 250 data points documented for each patient
- > Biospecimens provided with basic clinical data (e.g., age, gender, height, weight, surgical diagnosis, ischemia time, histopathology)
- > Corresponding comprehensive data and longitudinal data are available for additional fee

THE SCIENCE

Short ischemia times are critical when studying tissue biology as RNA & protein expression can change quickly after surgical excision.



Time-dependent change of pMTOR expression in colorectal cancer tissue after surgical resection

CUSTOMIZED PROSPECTIVE BIOSPECIMEN COLLECTIONS

SPECIFICATIONS

INDIVUMED offers customized biospecimen collection services which include collection of tumor and normal tissues (snap frozen, Formalin-fixed paraffin embedded (FFPE) and fresh without fixation, biofluids and comprehensive clinical data sets).

Comprehensive clinical data collection includes pathology report data, patient and family anamnesis, medication, clinical chemistry, and biospecimen collection information such as exact ischemia times for tissue.

AVAILABLE INDICATIONS

- › Colorectal cancer
- › Breast cancer
- › Prostate cancer
- › NSCL cancer
- › Pancreatic cancer
- › Ovarian cancer
- › Bladder cancer
- › Esophageal cancer
- › Liver cancer (HCC)
- › Gastric cancer
- › Benign diseases
(e.g. colorectal adenomas)
- › Other (please inquire)

AVAILABLE BIOSPECIMEN TYPES

- › Tissue (tumor & matched normal)
Collections for:
 - › Snap frozen tissue
 - › FFPE tissue
 - › Fresh tissue
 - › Fixation reagent defined by you

AVAILABLE BIOFLUID TYPES

- › Blood
- › Serum
- › Plasma
- › Urine
- › PBMCs
- › Other (please inquire)

Contact Information:

USA Phone: +1-570-768-4053
Europe Phone: +49-40-41 33 83-18

CustServ@indivumed.com
www.indivumed.com

