

# DRUG PROFILING SERVICES



## SPECIFICATIONS

A common problem in drug development for cancer treatment is the incapability to translate prediction of drug responses from cell line assays to highly heterogeneous tumors in individual cancer patients.

INDIVUMED offers tumor tissue slices which allow comprehensive drug testing in a natural tumor environment.

- › Analysis of functional drug effect
- › Evaluation of target expression
- › Investigation of pathway activities
- › Drug treatment of slices for up to 72 h

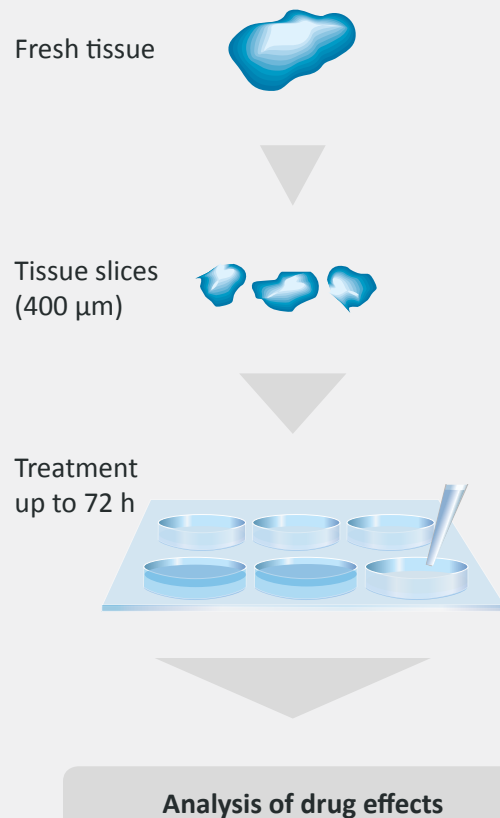
## COMPREHENSIVE ANALYSIS OF COMPOUND EFFECTS DETERMINING:

- › Toxicity/Viability
- › Proliferation rate
- › Apoptosis rate
- › Pathway activity (total protein/phosphorylated protein)
- › Target expression
- › DNA mutation status
- › Genomic profile
- › Proteomic profile

## AVAILABLE TECHNOLOGIES

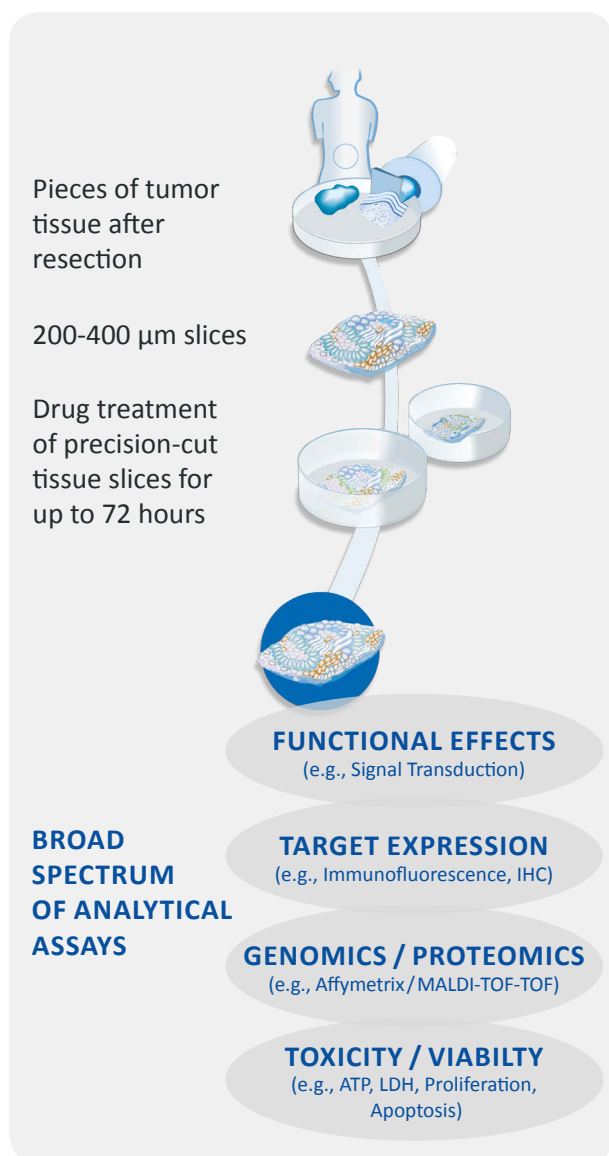
- › Meso Scale Discovery technology (MSD®)
- › NanoPro™ 1000 (phosphoprotein profiling)
- › Ventana platform (IHC)
- › DAKO
- › MALDI-TOF-MS
- › Affymetrix® (gene expression profiling)
- › Sequencing (mutation analysis)
- › Microscopy/Fluorescence microscopy
- › Digital imaging

## DRUG PROFILING USING HUMAN PRECISION-CUT TISSUE SLICES



# DRUG PROFILING SERVICES

## SCOPE OF SERVICE



### COLLECTION OF HUMAN TUMOR TISSUE MATERIAL AND CLINICAL DATA

- › According to customer's specification with regard to tumor entity, pre-treatment, subject group, etc.

### TISSUE PREPARATION AND TREATMENT WITH COMPOUNDS

- › Use INDIVUMED's tissue expertise for experiments
- › Planning of experiments with respect to compound doses and incubation times up to 72 h

### ANALYSIS OF DRUG EFFECTS

- › Protein assays: e.g. IHC, Western blot, NanoPro™ 1000, MSD®
- › Genomic & Proteomic profiling
- › Cell assays for toxicity/viability

### SCIENTIFIC REPORTING

- › Reports include raw data, analysis results, pathology report and clinical information from tissue donors

#### Contact Information:

**USA** Phone: +1-301-588-4650  
**Europe** Phone: +49-40-41 33 83-18

CustServ@indivumed.com  
www.indivumed.com

